

Product Announcement

Pro-Ject The Classic Evo

A “classic” turntable design, evolved.

Didcot, Oxfordshire – 4th October, 2019

With the release of The Classic turntable during 2016, as part of Pro-Ject Audio Systems’ 25th anniversary celebrations, the Austrian company caused a storm. The Classic combined timeless design principles with modern technologies and a closer eye on simplicity in design than many of its historical antecedents. Now, three years later, The Classic remains a core part of the Pro-Ject turntable range, but it’s time for an evolutionary update.

With the recent announcement of the X1 and X2 turntables, Pro-Ject Audio Systems are rationalising their core product offering to better guide customers onto the right turntable for them; and following in this process The Classic and The Classic SB SuperPack are now merging into one product offering: The Classic Evo.



The Classic Evo utilises a simple and elegant “frame” design, which bears a notable resemblance to some of the most famous turntables of the 1950’s, 60’s and 70’s. But the design is more than just aesthetically pleasing, it also combines proven hi-fi technologies with the ‘simple to set-up and own’ principles associated with Pro-Ject turntables, so you can just focus on enjoying your music.

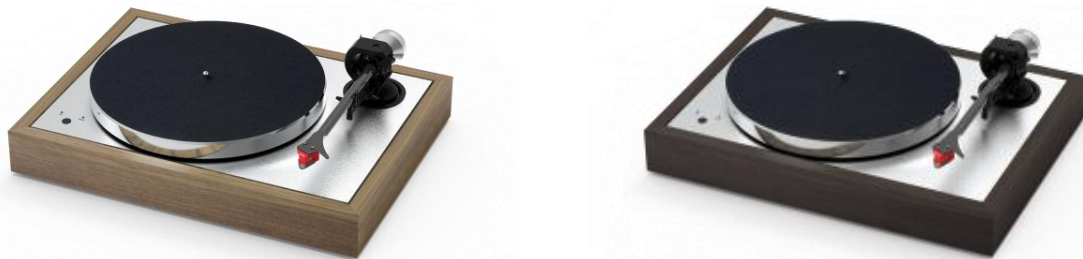
The improved two-plinth design utilises Thermo Plastic Elastomers (TPE) to isolate the metal-finished inner-chassis, rather than the traditional method of a spring-loaded sub-chassis; but this construction still effectively decouples the motor from the main bearing and the tonearm, reducing unwanted interference between the components.

The idea of reduced resonance transference in The Classic Evo carries through to the platter configuration. The heavy main platter is machined from a special aluminium alloy, which is lined with TPE damping, while the new sub-platter is diamond-cut from the same metal for absolute accuracy and reliability in production. This new system adds greater mass over previous The Classic designs and works to far finer tolerances. When mounted in the steel/bronze main bearing with Teflon lining, the end result is an ultra-silent, stable playback platform with minimal bearing noise.

For the highest performance in use, the platter system is belt-driven by a premium AC drive motor, which is powered by a DC/AC generator board for minimal noise and interference from unclean power supplies. For added convenience, there is also a simple speed control switch on the top surface of the inner plinth, allowing for quick and easy switching between 33 and 45 RPM playback speed.



The Classic Evo retains the specially designed tonearm tube from the original The Classic model. The one-piece conical tonearm tube is made from aluminium, wrapped in carbon fibre – creating a tube that's both light and very stiff, with excellent resistance to unwanted vibrations and interference. However, in the latest model the tonearm tube is mounted into a superior bearing housing, which uses a high-mass block to draw vibrations away from the signal wires. The striking nickel-finished counterweight is also TPE-damped, reducing the amplitude of the tonearm's resonant-frequency by 50%. Finally, the tonearm also benefits from the usual azimuth and VTA-adjustments associated with all high-end Pro-Ject tonearms.



The Classic Evo is supplied as standard with the popular Ortofon Quintet Red Moving Coil (MC) cartridge. The Quintet Red is a solid, all-round performer, and allows The Classic Evo to perform to a high standard straight out of the box. The Classic Evo is also optionally available to special order without a pre-fitted cartridge.

The Classic Evo includes a set of height-adjustable dampened feet, a pair of Connect-IT E phono RCA cables (specially developed for use with turntable systems) and a removable dust cover. It's available in Eucalyptus or Walnut veneer finish. It is also supplied as standard with all necessary set-up tools.

The Classic Evo retains all the strong points of the original design and improves in certain areas to create a better experience than ever before. The sound is exciting and engaging, the design is breathtaking, the technology is first-class, and the product is accessible to any type of music lover.

SRP: £1,250.00 (£1,050.00 without the Quintet Red MC)

The Classic Evo is available across the UK now.

Technical Information

Speed:	33 / 45 / 78 RPM (electronic speed change)
Drive Principle:	Belt drive
Platter:	300mm Aluminium (TPE-damped)
Main Bearing:	Stainless steel (Bronze bush with Teflon lining)
Wow & Flutter:	± 0.10% (33 RPM) / ± 0.09% (45 RPM)
Speed Variance:	± 0.13% (33 RPM) / ± 0.10% (45 RPM)
Signal-to-Noise Ratio:	70dB
Tonearm:	The Classic Evo Tonearm (9")
Effective Arm Length:	230mm
Effective Arm Mass:	13.5g
Overhang:	18mm
Included Accessories:	Dust Cover, Connect-IT E (RCA) cable, Ortofon Quintet Red
Power Supply:	15V DC
Power Consumption:	5W Max. / <0.5W in standby
Dimensions (W x H x D):	462 x 131 x 351mm (lid closed)
Weight:	10.5kg (net)

Notes for Editors

Consumer Contact for Publication

Henley Audio
Didcot, Oxfordshire

Tel: 01235 511 166
Email: sales@henleyaudio.co.uk
Web: www.henleyaudio.co.uk



About Pro-Ject Audio Systems

Pro-Ject Audio Systems are widely recognised as one of the finest turntable manufacturers in the world. Their mission is simply to produce the best sounding analogue components at the most competitive prices possible. The current range spans a huge variety of price points, with a variety of products targeted to key demographics or to accommodate any of the modern listener's unique requirements.

Based in the Austrian countryside, Pro-Ject Audio Systems use specialised manufacturing partners to produce all their products, and the entire turntable range is assembled with great skill, care and attention in the Czech Republic.



About Henley Audio

Henley Audio has been importing and distributing industry-leading hi-fi equipment to the UK and Ireland since 1997. With a passion for great sound and a firm focus on brand integrity, we work to deliver excellence in both product and service.

Formed as the result of a management buy-out of Ortofon UK, Henley Designs Ltd. (trading as Henley Audio) operates in-house sales, marketing, service, support and warehouse teams in order to offer the full turn-key solution for suppliers. The brands we represent are not only highly-regarded in their own right, but they also share a symbiotic relationship with other brands in our portfolio.

For more information, visit www.henleyaudio.co.uk

Press Contact

Simon Powell

Henley Audio, Unit B, Park 34, Collett, Didcot, Oxfordshire, OX11 7WB

Tel: 01235 511 166

Email: sp@henleyaudio.co.uk

Web: www.henleyaudio.co.uk

//Ends