



INSTRUCTIONS FOR USE  
Pro-Ject Wireless Box E

Dear music lover,

thank you for purchasing a Pro-Ject Audio Systems wireless streaming amp.

In order to achieve maximum performance and reliability you should study these instructions for use carefully.



*Warning of a hazard for the user, the unit or possible misuse.*



*Important notice.*

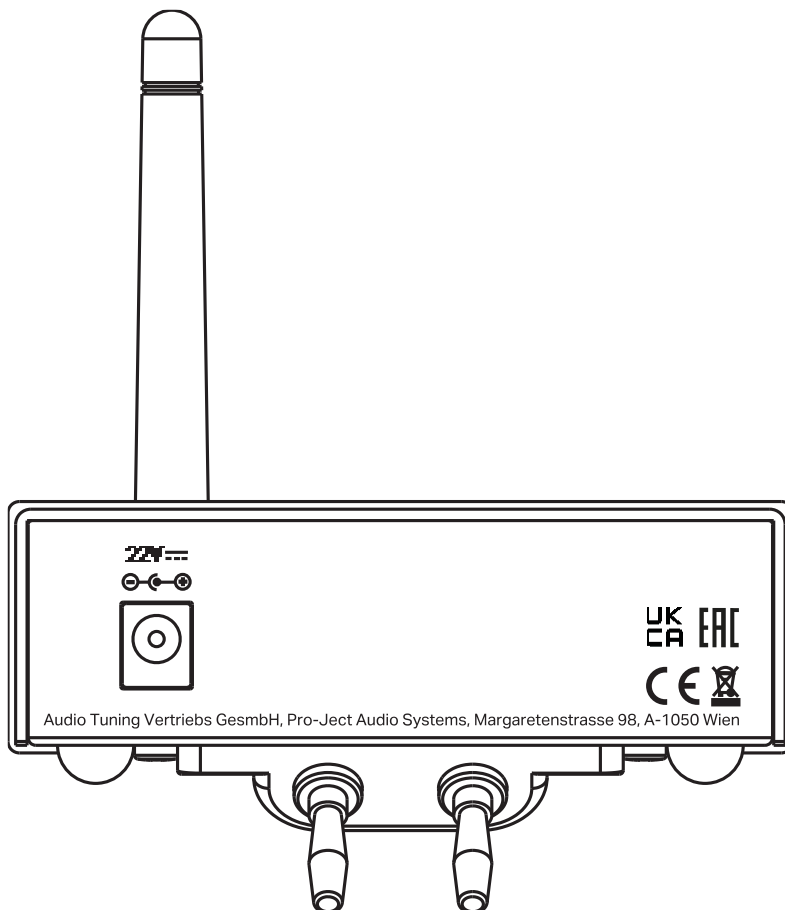
## Safety instructions

*AC outlet voltages vary from country to country. Before connecting to the mains, make sure that the voltage in your area meets the voltage requirements printed on the power supply.*



*The power supply is used to connect/disconnect the unit from the mains. Make sure that the power supply is easily accessible at all times. Never handle the device, the power supply while your hands are wet or damp. Avoid letting liquids enter the device or the power supply. Never place any item containing liquid, such as a flower vase on or near the device. Never spill any liquid on the device or the power supply. Never place any naked flame sources, such as lighted candles on or near the device. The product shall not be used in damp or wet locations, next to a bathtub, sink, swimming pool or any other similar conditions.*

## Connectors



*1. Make all connections whilst the unit is disconnected from the mains.*



*2. Never connect or disconnect power supply to or from the unit whilst the power supply is connected to the mains! Never use any other power supply than the one supplied with the unit with the exception of dedicated Power Boxes which can replace original power supplies.*

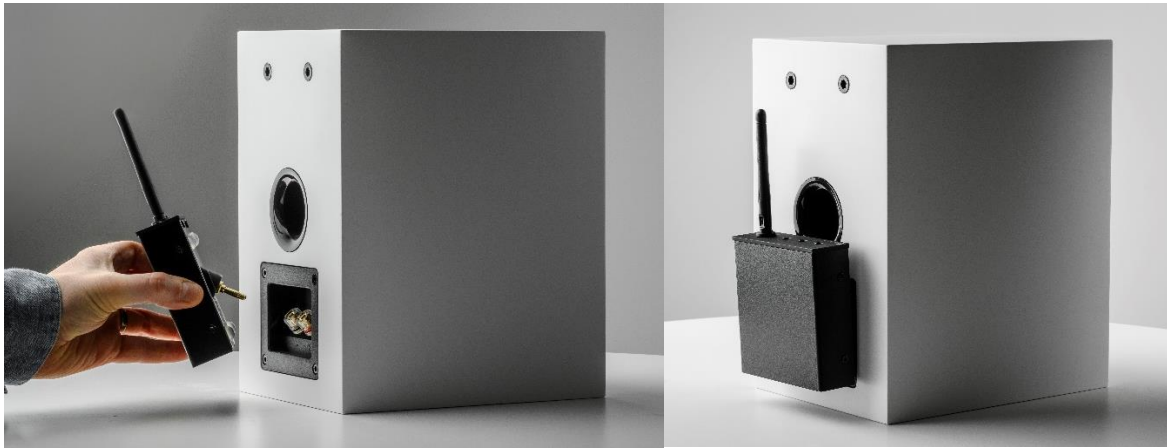
## Speaker output

The Wireless Box E can be directly connected to the speaker terminals of compatible Pro-Ject Audio Systems speakers:

Speaker Box 3 E, Speaker Box 3 E Carbon, Speaker Box 5 E, Speaker Box 5 E Carbon, Speaker Box 5 S2, Speaker Box 10 E, Speaker Box 10 E Carbon, Speaker Box 12 E Carbon



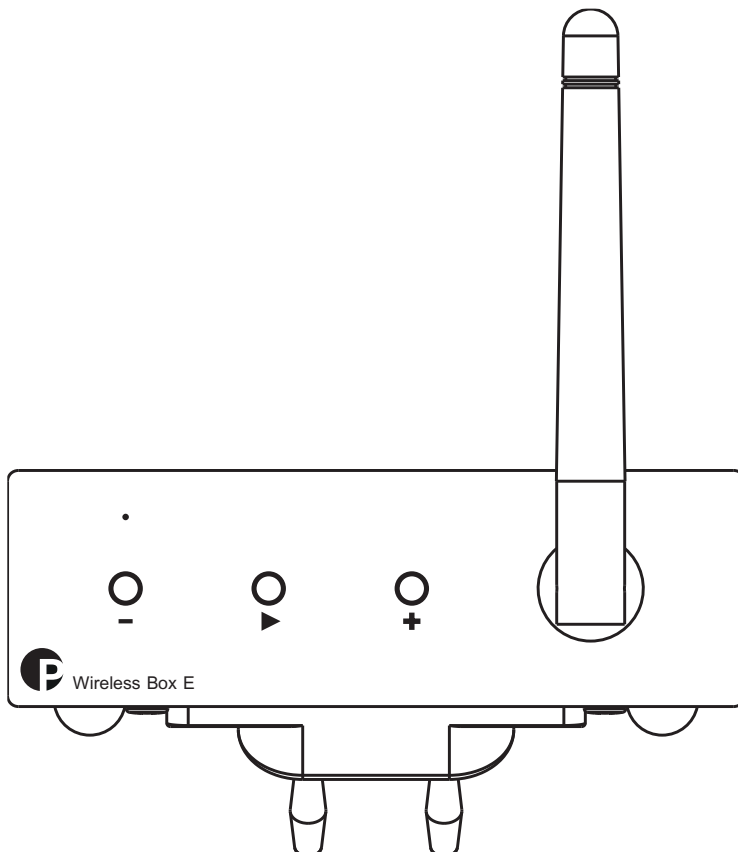
*An extension cable for other speakers/brands, where the Wireless Box E, is not directly attachable is available separately.*



## Mains power connection

Connect the low voltage plug from the power supply to the **22V Power** socket before connecting the power supply to the mains.


## Front panel controls



## Power On

The unit powers on as soon as the mains power connection is connected.

## Play/Pause

Pressing the button  plays or pauses the last played digital stream.



### Factory & WiFi Reset

Press and hold the Play/Pause button for 10s. Factory reset clears all streaming - source, volume, and network - settings and returns the unit back to the original factory settings.

## Volume

Adjust the volume to the desired level, using the + / - buttons.

The volume can also be adjusted in the **Pro-Ject Home** app or the volume buttons on your phone/tablet.

## Streaming, WiFi & BT connection

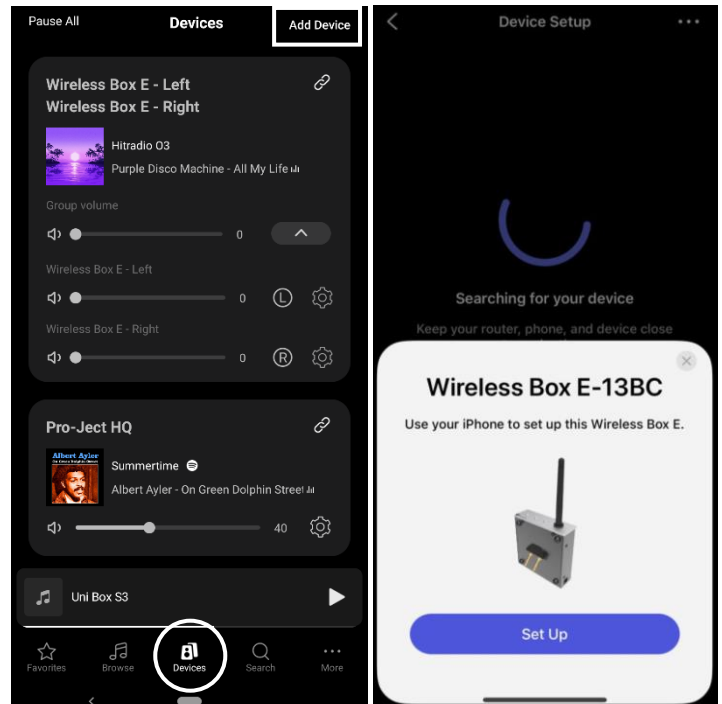
The antenna comes factory attached on the back panel.

### WiFi Setup

- Download the **Pro-Ject Home** App (available for Android and iOS)
- Power on the Wireless Box E
- Open the **Pro-Ject Home** App
- The app will automatically find the Wireless Box E and walk you through the setup process.
- If not tap **Add Device** in the top right corner in the **Devices** tab.



Make sure to give the app BT access on your phone for this to work.



## Spotify Connect



Use your phone, tablet or computer as a remote control for Spotify. Go to [spotify.com/connect](https://www.spotify.com/connect) to learn how

The Spotify Software is subject to third party licenses found here:  
<https://www.spotify.com/connect/third-party-licenses>

## BT Connection

Pairing phones:

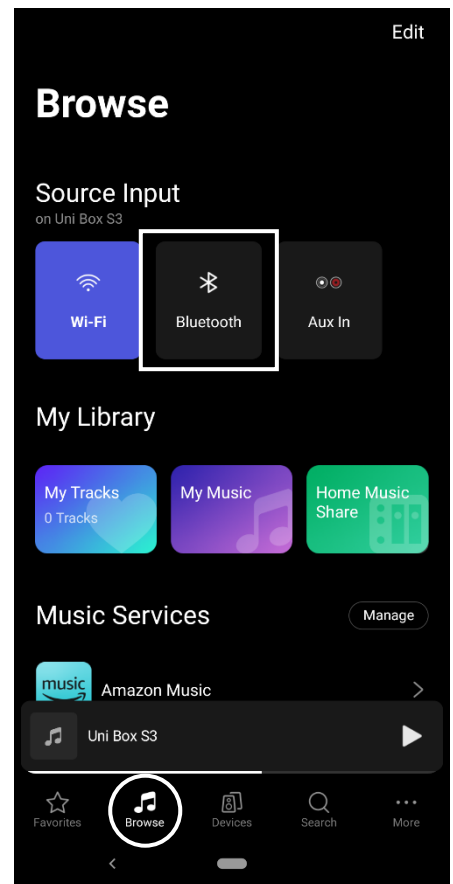
- In the **Pro-Ject Home App** go to **Browse** and select **BT**.
- Make sure BT is turned on on your phone. Open your phone's BT settings and look for a new BT device called **"Wireless Box E"**. Tap on **"Wireless Box E"** to pair your phone.

Pairing a Pro-Ject BT turntable:

- In the **Pro-Ject Home App** go to **Browse** and select **BT**.
- Put a vinyl record on your turntable and start playing the record (BT on your turntable still turned off).
- Turn on BT on your turntable.
- Wait a few moments, the connection is established automatically.

BT Troubleshooting:

- Make sure the two devices to be connected are in as close a proximity as possible.
- Your phone is typically very close to the Wireless Box E when you try to connect it via BT.
- Probably, your turntable is not. But the same rules apply. Establishing BT connections works best when the devices are as close as possible to each other. If possible, within 1-2 meters.
- Make sure nothing else is connected via BT to the Wireless Box E when trying to connect new devices. Turn off BT on ALL other devices except the one you want to connect.



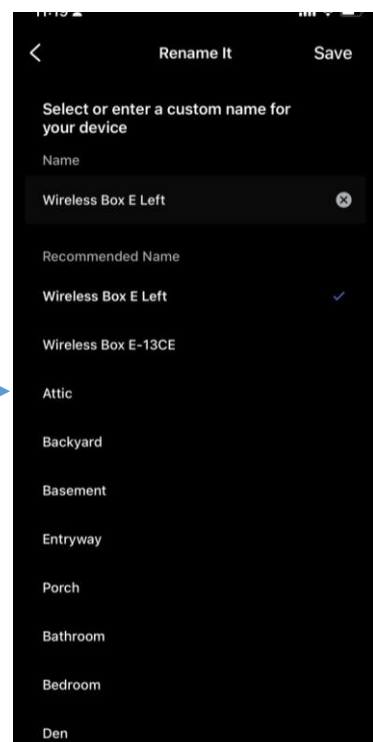
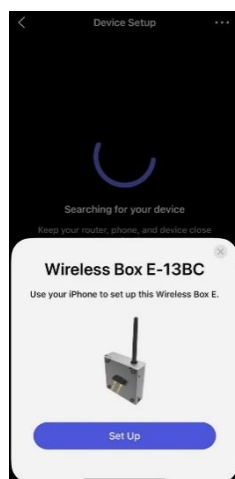
## Stereo Pairing

Two Wireless Box E can be combined into a stereo pair.

We recommend to rename your Wireless Boxes to know which one is the left and which one the right.

You can do this during first setup:

- 1) Unpack the Wireless Box E intended for your left speaker.
- 2) Attach it to your left speaker
- 3) Connect power supply to power it on
- 4) Connect to WiFi
- 5) Rename your Wireless Box E, for example **Wireless Box E Left**

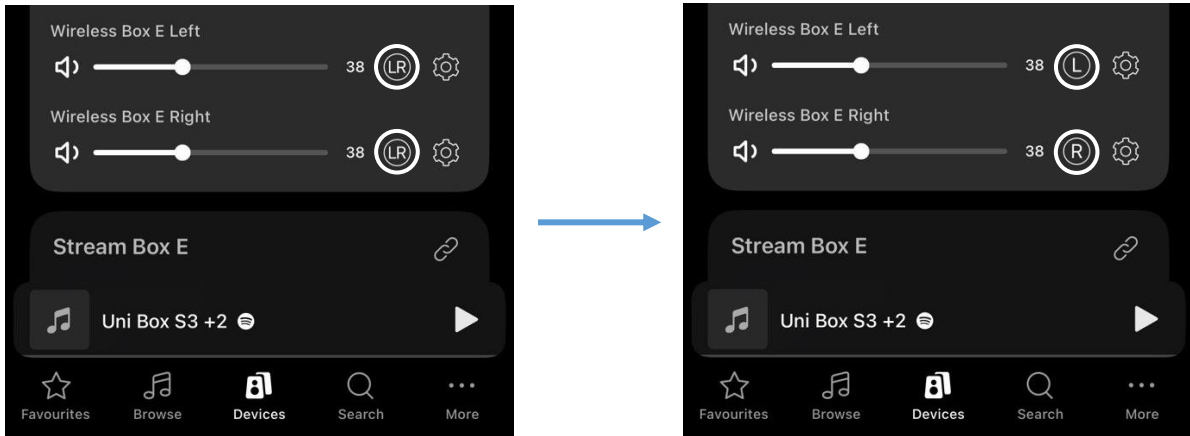


- Repeat steps 1 – 5 for the right speaker Wireless Box E



You can also rename your devices later by tapping the **settings wheel** and selecting **Rename**.

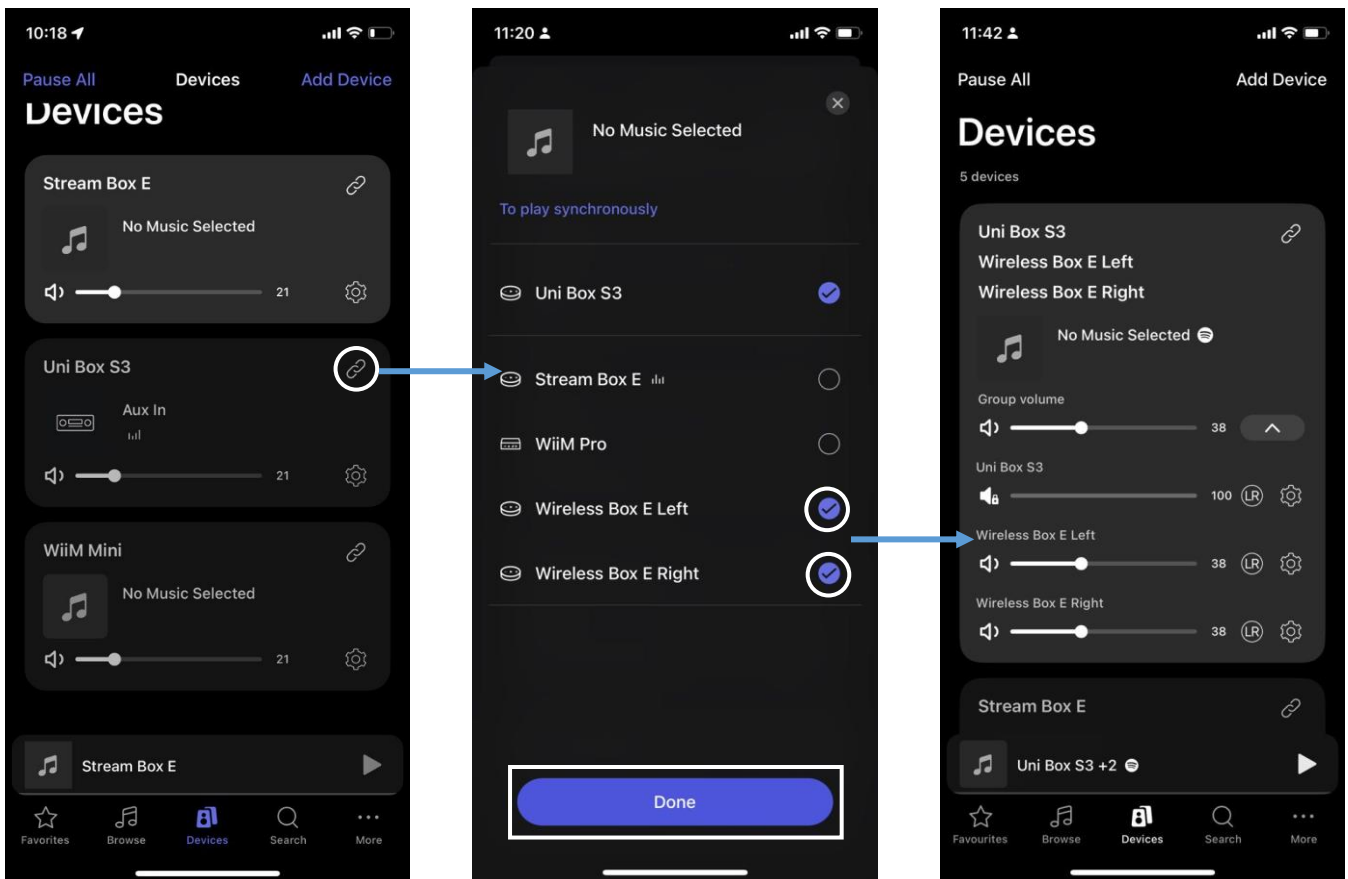
- Group the left and right Wireless Boxes and set them to Left **L** and Right **R** accordingly by tapping the **LR** button. Use the **“Group Volume”** (or **volume buttons on your phone** after selecting the group) slider to change volume for both devices at the same time.



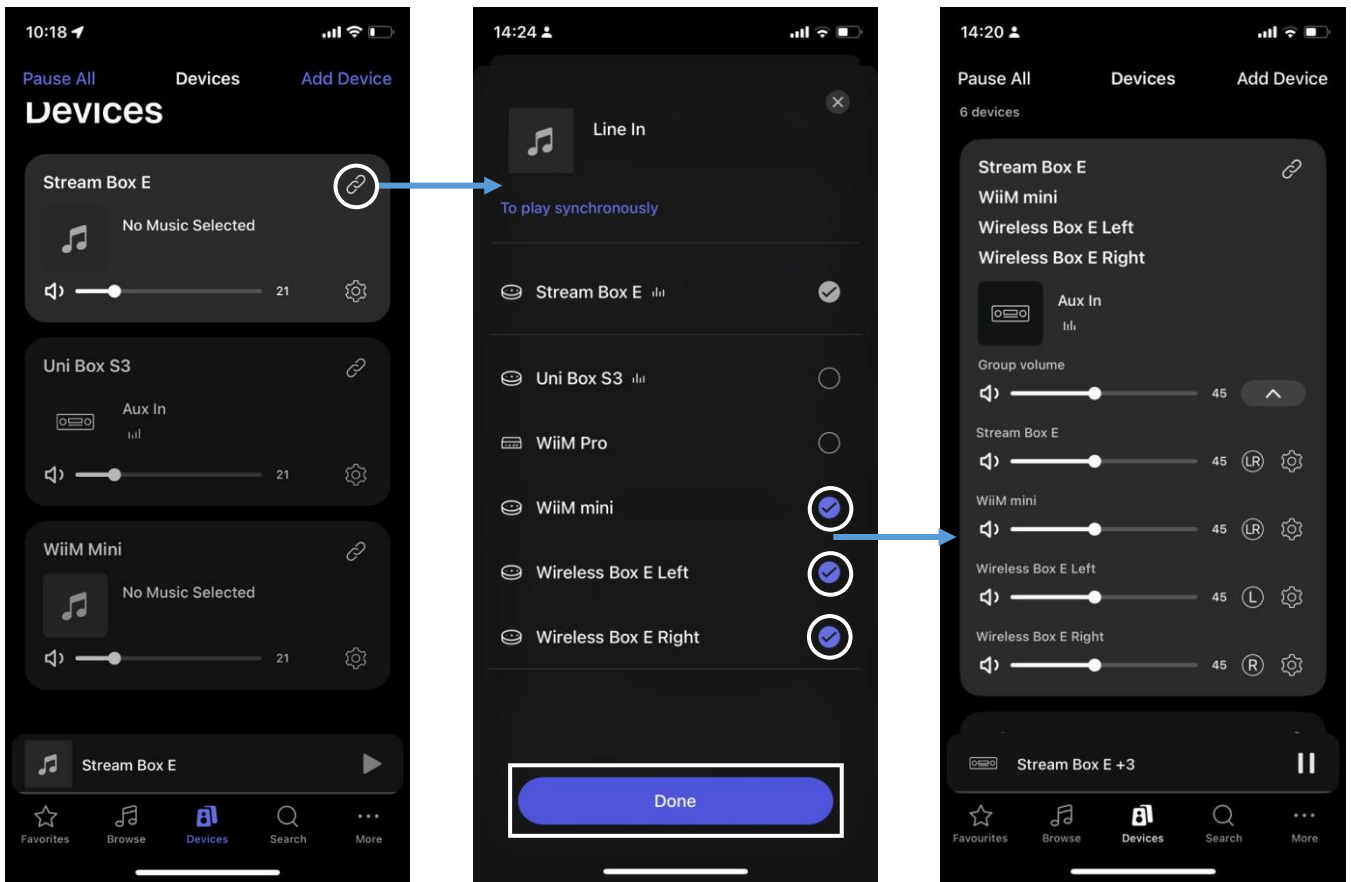
## Multiroom Streaming

The Wireless Box E can receive streams from Uni Box S3 or Stream Box 3 or other compatible Pro-Ject or WiiM streamers. This allows you to stream the connected analogue inputs from your Uni Box S3 (for example your turntable, CD player and other sources) to your Wireless Box E.

- Group the Wireless Box E (or two Wireless Box E for a stereo setup) with the device that you want to receive the stream from. The device you want to receive the stream from needs to be the first in the group. From Uni Box S3 to Wireless Box E:

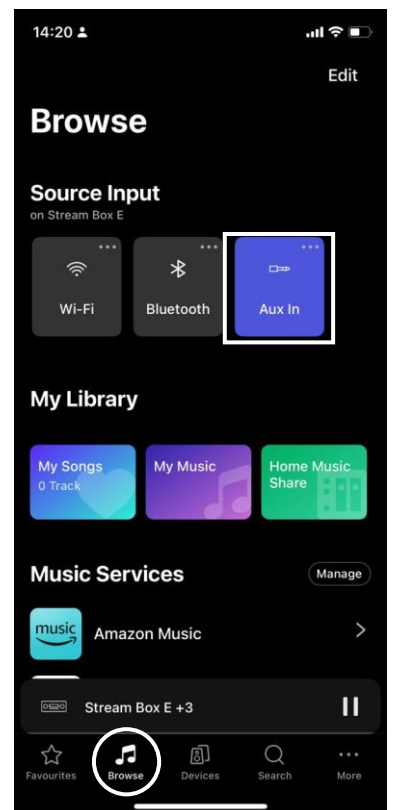


From Stream Box E to Wireless Box E:

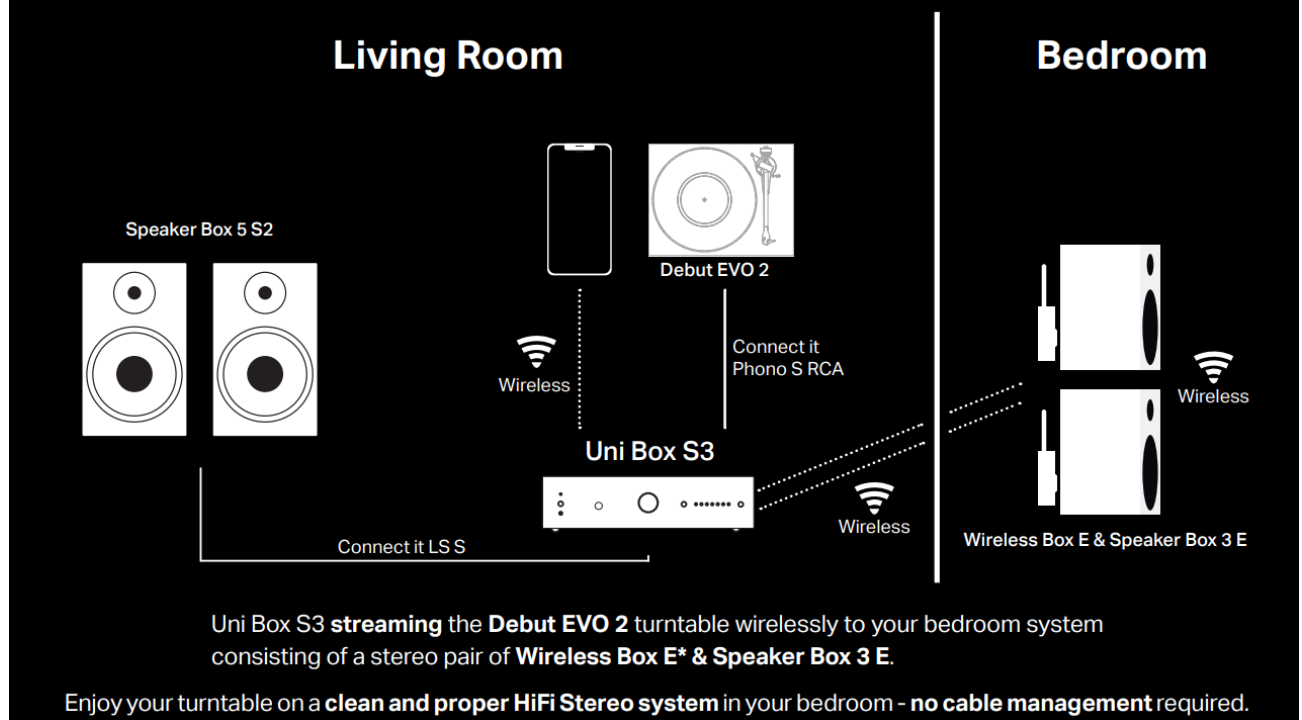


If you own two Wireless Box E and want to make a stereo pair, set them to Left **L** and Right **R**.  
 If you had already paired your Wireless Boxes into a stereo group before, be sure to unpair them before trying to pair them again with a different device. Only unpaired devices will show up in the group selection screen.

- 2) Tap on the group to select it. Tap **Browse** and select **Aux In**.
- 3) Enjoy your turntable, CD player and all other locally connected audio sources on your Uni Box S3, Stream Box E, etc... on your Wireless Box E! Stream your turntable from one room to the other.



# Multiroom Setup



## Technical specifications Pro-Ject Wireless Box E

|                                |  |
|--------------------------------|--|
| Speaker output connectors:     | 1 pair Ø 4mm banana plugs; directly attachable (without needing separate loudspeaker cable) to: Speaker Box 3 E, Speaker Box 3 E Carbon, Speaker Box 5 E, Speaker Box 5 E Carbon, Speaker Box 5 S2, Speaker Box 10 E, Speaker Box 10 E Carbon, Speaker Box 12 E Carbon<br>*extension cable for other speakers available separately |
| Output power:                  | 1x 25W/50W at 8/4 ohms (1% THD)  |
| Frequency response:            | < -0,3dB; -2dB at 4 ohms (20Hz; 20kHz)   |
| THD:                           | < 0.09% at 10W at 4 ohms   |
| Channel separation:            | 63dB @ 1kHz at 4 ohms  |
| Signal to noise ratio:         | 92dB 'A' weighted at 4 ohms  |
| DAC:                           | TI PCM 5121 (up to 24bit/192kHz)   |
| Wireless connectivity:         | Wi-Fi 5, 802.11 b/g/n/ac 2.4 G and 5G dual bands, BT 5.1   |
| Streaming control app:         | Pro-Ject Home  |
| Streaming Services:            | Tidal, Tidal Connect, Spotify Connect, Amazon Music, Qobuz, Deezer, Soundcloud, Webradio (TuneIn, vTuner, iHeartRadio, BBC Radio)<br>*supported streaming services can change without prior notice   |
| BT music receiver codec:       | SBC, AAC, A2DP profile   |
| Outboard power supply:         | 22V/1A DC, 110-240V/50, 60Hz   |
| Power consumption in standby:  | <0.5W  |
| Dimensions W x H x D:          | 103 x 37 x 120 mm  |
| Weight (without power supply): | 410g without power supply  |

Should you encounter a problem which you are not able to alleviate or identify, please contact your dealer for further advice. Only if the problem cannot be resolved there, the unit should be sent to the responsible distributor in your country.

## Disclaimer for 3<sup>rd</sup> Party Content

Access to content provided by third parties requires a high speed internet connection and may also require account registration and a paid subscription. Third party content may be changed, suspended, interrupted, or discontinued at any time without notice and Pro-Ject Audio Systems disclaims any liability in connection with such occurrences. Pro-Ject Audio Systems does not represent or warrant that content services will continue to be provided or available for a particular time period, and any such warranty, express or implied, is disclaimed.

## Warranty



*The manufacturer accepts no responsibility for damage caused by not adhering to these instructions for use. Modification or changes to any part of the product by unauthorized persons release the manufacturer from any liability over and above the lawful rights of the customer.*

## Copyright, trademarks

Pro-Ject Audio Systems is a registered Trademark of H. Lichtenegger.

This guide was produced by: Pro-Ject Audio Systems  
Copyright © 2026. All rights reserved.

The information was correct at the time of going to press. The manufacturer reserves the right to make changes to the technical specification without prior notice as deemed necessary to uphold the ongoing process of technical development.

BT® is a trademark owned by the BT SIG Inc.

## UK PSTI Statement of Conformity

Audio Tuning Vertriebs GmbH hereby declares that this Wireless Box E complies with the applicable security requirements set out in Schedule 1 of The Product Security and Telecommunications Infrastructure (Security Requirements for Relevant Connectable Products) Regulations 2023 at the time of this Statement, required by the UK government in the Product Security & Telecommunications Infrastructure Act 2022.

Audio Tuning Vertriebs GmbH will provide software security updates for this product as described on this webpage: <https://www.project-audio.com/en/product-security-software-updates/>

If you detect a vulnerability with this product, please contact us following the guidance covered on this webpage: <https://www.project-audio.com/en/data-protection-declaration/>

This statement was last updated on 01.05.2025.

Waste from Electrical and Electronic Equipment (WEEE): This directive mandates the collection and recycling of electronics and component materials in order to reduce the amount going to landfills. Outside North America, when the user decides to discard this product, it must be sent to a separate collection facility for recycling. Please contact your point of purchase for more details.

Federal Communication Commission (FCC) Interference Statement FCC Part 15: This equipment has been tested and found to comply with the limits for a Class B digital device, pursuant to Part 15 of the FCC Rules. These limits are designed to provide reasonable protection against harmful interference in a residential installation. This equipment generates, uses and can radiate radio frequency energy and, if not installed and used in accordance with the instructions, may cause harmful interference to radio communications. However, there is no guarantee that interference will not occur in a particular installation. If this equipment does cause harmful interference to radio or television reception, which can be determined by turning the equipment off and on, the user is encouraged to try to correct the interference by one or more of the following measures:

- Reorient or relocate the receiving antenna
- Increase the separation between the equipment and receiver
- Connect the equipment into an outlet on a circuit different from that to which the receiver is connected
- Consult the dealer or an experienced radio/TV technician for help.

This device complies with part 15 of the FCC Rules. Operation is subject to the following two conditions: (1) This device may not cause harmful interference, and (2) this device must accept any interference received, including interference that may cause undesired operation. FCC Radiation Exposure Statement: This equipment complies with FCC radiation exposure limits set forth for an uncontrolled environment.

To maintain compliance with FCC's RF exposure guidelines, this equipment should be installed and operated with minimum distance 20cm between the radiator and your body. Use on the supplied antenna.

**Contains FCC ID: 2ANOG-ASR001**

## Declaration of Conformity

We **Pro-Ject Audio Systems** a division of Audio Tuning GmbH

Margaretenstrasse 98

1050 Vienna,

Austria

declare under our responsibility that the product is in conformity with the provisions of Directives:

2014/35/EU including amendments

2014/30/EU including amendments

2014/53/EU including amendments

The following harmonised standards were applied:

Health: EN62479:2010

Safety: EN60950-1:2006+A11:2009+A1:2010+A12:2011+A2:2013, EN62368-1:2014/A11:2017, EN61558-1:2005/A1:2009, EN61558-2-16:2009/A1:2013

EMC: EN301489-1 V2.2.0: 2017-03, EN301489-17 V3.2.0:2017-03, EN55032:2015, EN55035:2017, EN61000-3-2:2014, EN61000-3-3:2013

Radio Spectrum: EN300328 V2.1.1 (2016-11)

**Pro-Ject Audio Systems** a division of Audio Tuning GmbH

1050 Vienna, Austria, Margaretenstrasse 98

info@project-audio.com